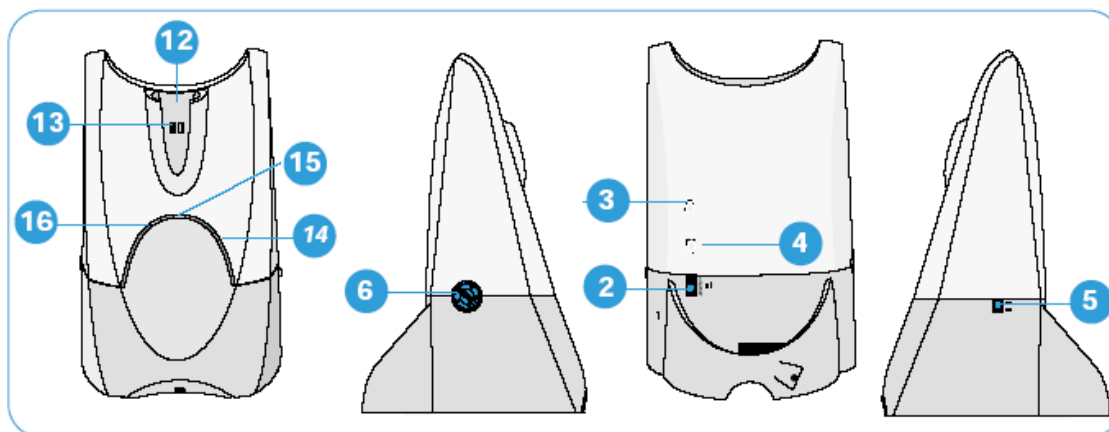
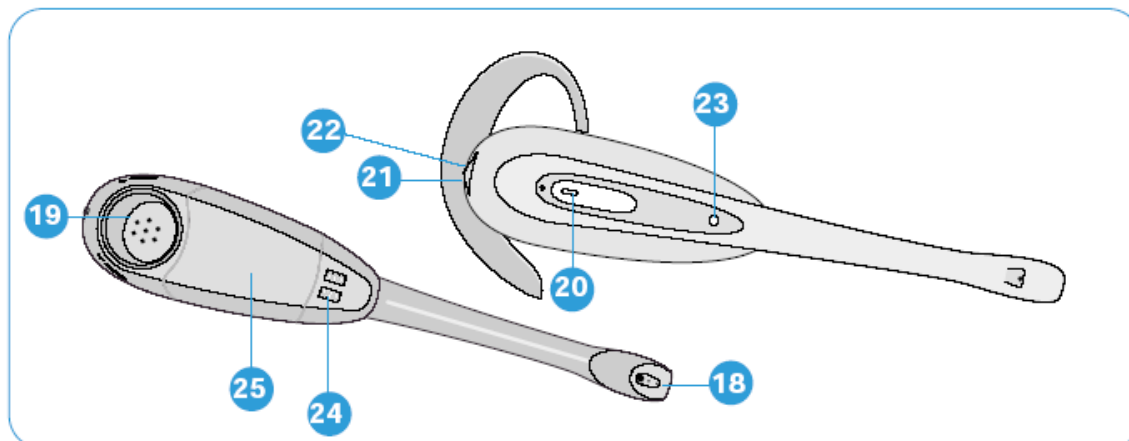


CS60 Pairing Guide - Step by Step Instructions

BASE UNIT



HEADSET



SUBSCRIPTION (Pairing Headset to CS60 Base station)

The Headset and Base Unit are supplied subscribed to each other. However if you wish to use a replacement headset with the base unit then the units must be resubscribed as follows:

1. Return the headset to the Headset Docking Cradle (12)
2. Press and hold both the Speak Volume Adjust Buttons (3 & 4) on the base unit for a minimum of 5 seconds. The Power Indicator (16) will then flash
3. Press and hold the Headset Mute Switch (22) for a minimum of 5 seconds. The On-line indicator (23) will then illuminate.
4. Subscription completion is indicated when the Power Indicator (16) is fully illuminated and the On-line Indicator (23) is extinguished.

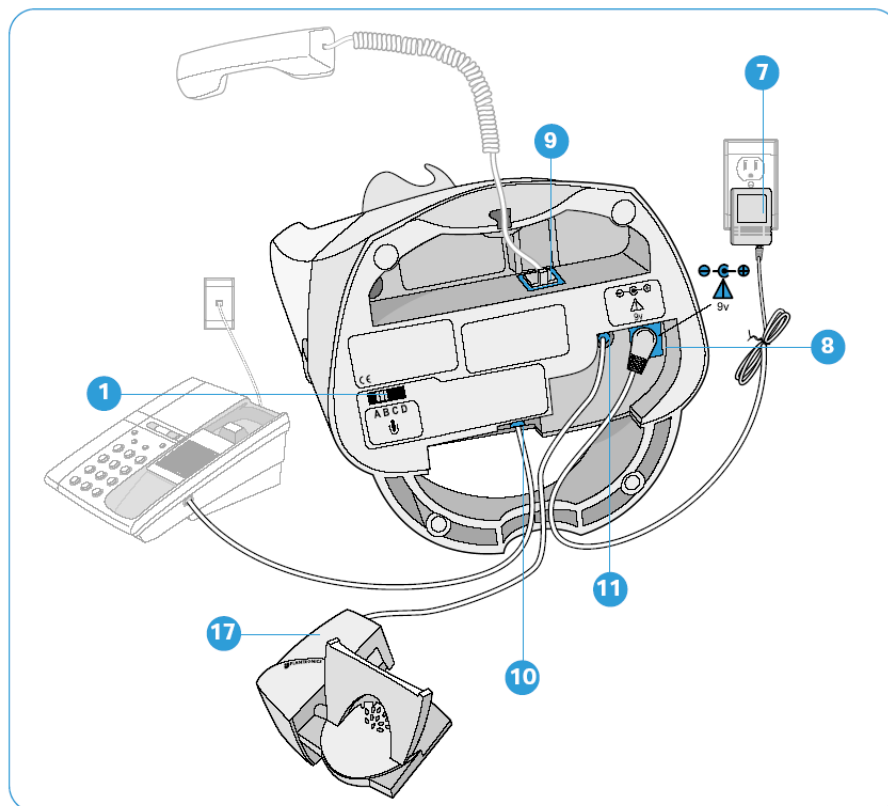
5. If subscription fails within 2 minutes the headset will return to the un-subscribed state

SYSTEM RESET

To recover from some fault conditions (refer to the Troubleshooting section) you may need to perform a system reset.

To reset the headset press both the Talk button (20) and the Mute button (22) for 5 seconds.

When the On Line Indicator (23) blinks, release both buttons. Press the Talk button (20) again. Next reset the base unit by disconnection the AC power adaptor (7) from the AC Power Adapter Port (8) for 5 seconds, then reconnect. The system reset operation is then complete.



MAINTENANCE HINTS

1. Unplug the unit from the telephone and the AC Power Adaptor from the mains supply before cleaning.
2. To clean the headset, remove the headset from the attachment and wipe clean
3. Clean the equipment with a damp (not wet) cloth.
4. Do not use solvents or other cleaning agents